

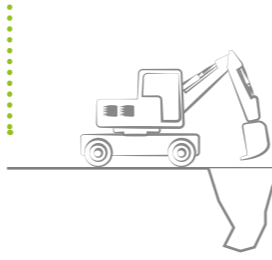


STANDARD
UNDERGROUND
SYSTEM

STANDARD UNDERGROUND SYSTEM

Maximum simplicity.
Easy to install, use and maintain.

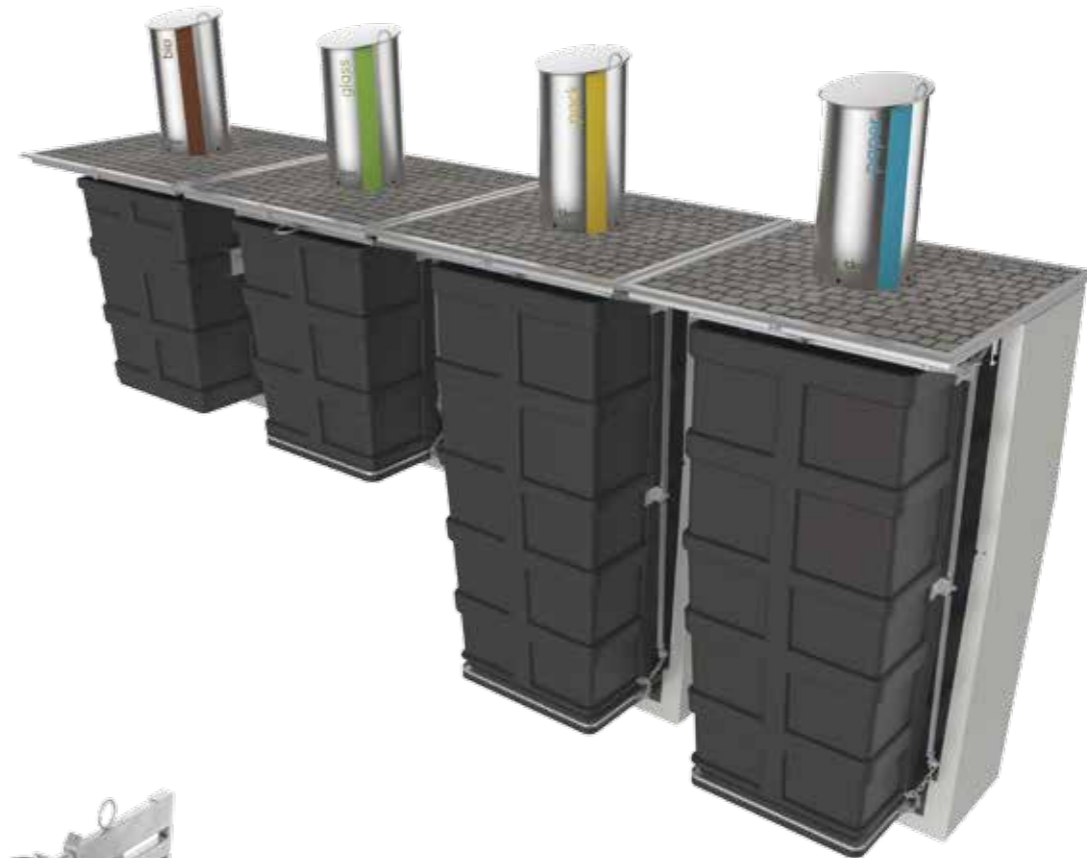
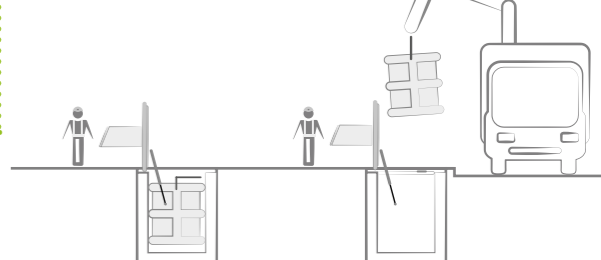
1 Easy to install



2 Easy to use



3 Easy to collect



SELECTIVE COLLECTION



The standard Sotkon underground waste system is a complete concept with very low maintenance costs and easy to use.

Our unitary concrete bunker is 100% watertight, to prevent water entry and the exit of leachate that contaminates the soil. Containers for the collection are also watertight. These components are placed underground to receive the waste through an intake column located on the surface.

The opening system of the pedestrian platform is designed to be conveniently used by a single operator. The lid opens with a key and it is driven by two gas cylinders that open up to form an angle near to 90 degree.

Since the equipment's are unitary it is easy to avoid the underground infrastructures. The system can also be installed at the road gradient to avoid any steps around it.

The Sotkon system reduces collection costs as it requires low maintenance, less manpower, decreases the frequency of collection and the number of vehicle movements.



EASY OPENING

“ Perfect integration with the environment ”

Index:
a. Intake Column
b. Plastic Container
c. Concrete Bunker
d. Pedestrian Platform
e. Safety Platform



COMPONENTS

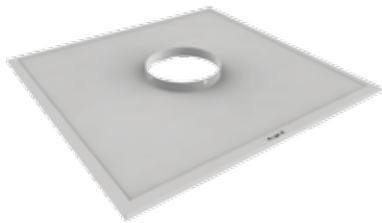
Intake Column

Characterized by their simplicity and functionality, Sotkon intake columns present an attractive design for street furniture. Our products are designed to ergonomically provide ease of use, safety and hygiene. The intake columns are produced in stainless steel to preserve its appearance and to endure extremely aggressive environments. It is possible to provide models on request for special projects. The opening can be modified for specific types of waste.



Pedestrian Platform

The construction of the pedestrian platform (lid) and of the various components are made with anti corrosion resistant materials. The lid is designed to integrate perfectly within the rim of the bunker so as to ensure complete sealing of the joint. A perimeter gutter eliminates the possibility of infiltrations of rainwater. In order to ensure seamless integration in the surrounding area, the finishing of the lid can be made in various solutions from stone or brick to resins of different colors.



Containers

Containers are designed to have an exceptional mechanical strength, having no metallic element in contact with the waste. The deposit and the lower lids of the container are made of polyethylene by rotational molding and the metal hardware it is hot dip galvanized. A small crane placed on the roof of the waste collection vehicle is used to lift the 3m3 closed bottom container up to the rear bin lifter where it is discharged. 3m3 and 5m3 open bottom containers are collected and discharges by top loading waste collection trucks equipped with a crane.



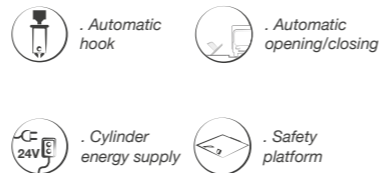
Concrete Bunker

The concrete bunker is a precast part comprising a base, two transverse walls and two longitudinal walls. The internal shape of the bunker is designed to support the opening mechanisms, safety platform and external shape of the polyethylene container. The base has a recess for the storage of cleaning operations liquids. Sotkon bunkers are designed to meet all applicable specifications of the Euro Code and to prevent any buoyancy effect.



Supplements

The safety platform is a device that closes the entire opening of the bunker when the container is removed. For a single operator collection Sotkon can provide a crane automatic hook mechanism allowing an easier and remote controlled handling of the container. An automatic lid option is possible with 24V electric driven cylinder that can be powered by the waste collection truck or from the electrical net work if available.



SOTKIS Intelligent Systems

SOTKIS is an integrated management system that provides information about the various processes involved in waste collection so as to maximize the efficiency of allocated resources and increase the profitability of service. Using the SOTKIS system, each entity may have information about the filling level of containers, plan the most efficient route, know frequencies of deposition and introduce systems Pay As You Throw (PAYT).



Optionals

Intake Column



Special Projects:
Pacman intake column



Special Projects:
Ypsilon intake column



Optional:
Lid soft close



Optional:
Reduction for glass and batteries



Optional:
Pedal

* Other solutions on request.



Optional:
Internal trapdoor for reduction



Optional:
Single or double drum for access restriction



Optional:
Retro Intake column with access control

Pedestrian Platform (Finishing)



.Resin epoxy in different colours



.Aluminum



.Cobblestones



.Granite stones

* Other finishes on request.

Containers (Collection Systems)

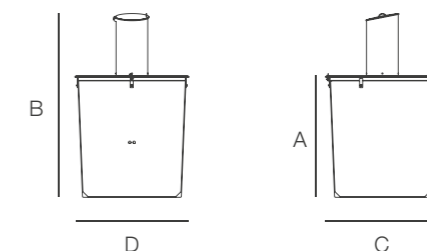


* Other capacities on request.

Technical Drawings (Assembly)

Capacity	A	B	C	D
3M ³	1970	2970	1840	1860
5M ³	3220	4220	1840	1860

Units in mm (approx values).
These dimensions are not suitable for civil construction.



STANDARD

UNDERGROUND
SYSTEM



All the components are tested with supervision from TUV according to the standards EN13071-1 and EN13071-2 and European normative machine 2006/42/CE

Worldwide patented system