



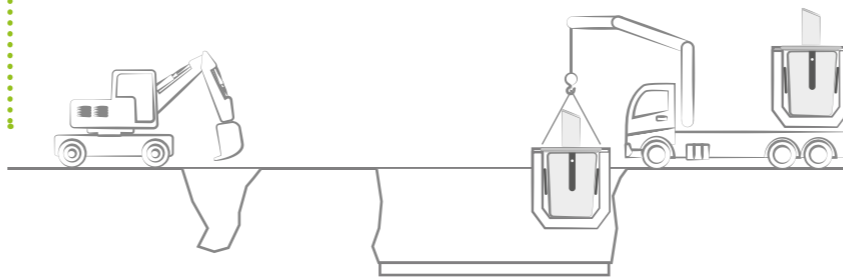
**SIDE  
LOADING**

UNDERGROUND  
SYSTEM

## SIDE LOADING UNDERGROUND SYSTEM

Totally automatic.  
Easy to install, use and maintain.

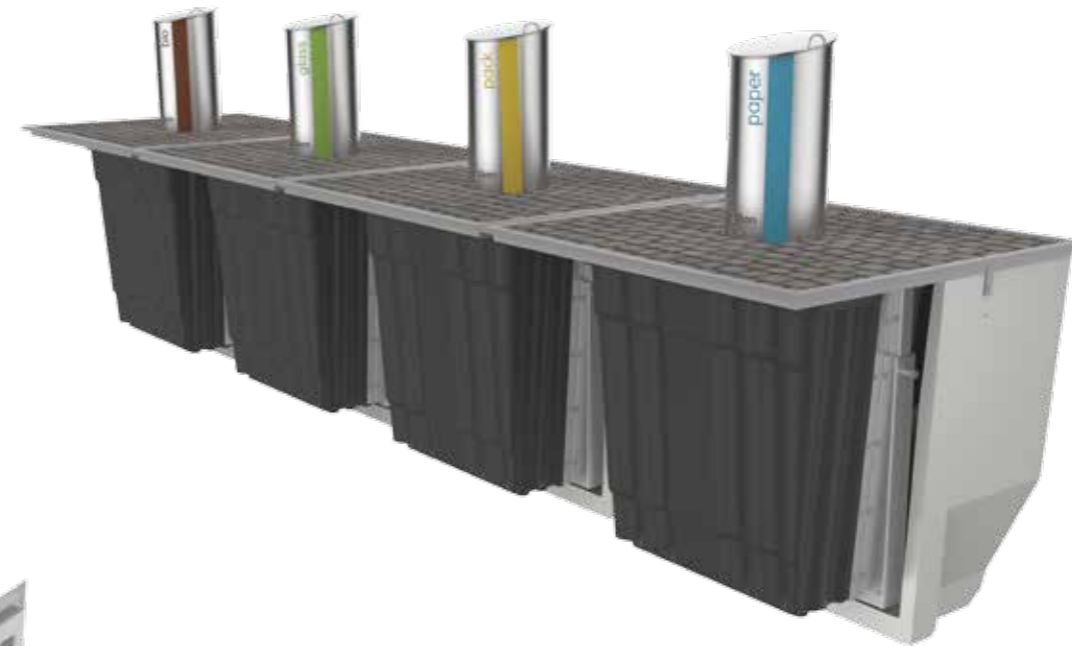
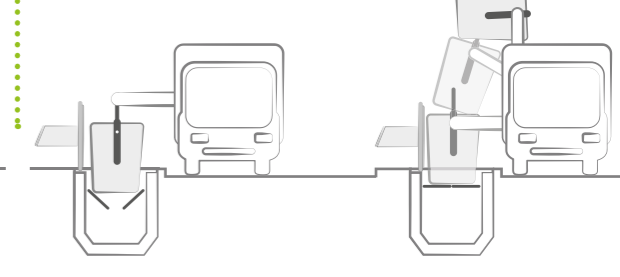
1 Easy to install



2 Easy to use



3 Easy to collect



### SELECTIVE COLLECTION



The Sotkon side loading underground system is a concept based on simplicity and perfect for single operator collection.

The equipment doesn't include any costly hydraulic connections and complex mechanisms for lifting the containers. The maintenance costs are very low.

This system has a sealed concrete bunker that prevents water entry and the exit of leachate that contaminates the soil. The side loading containers use the option of lifting arms that comprise a mechanical drive and a polyethylene body to prevent corrosion.

The collection process is fully automated and controlled from inside the cabin through a wifi system. This system allows bidirectional communication between the container and the truck so as to receive all the information from sensors placed inside the underground container and integrate this information to control all the movements of the truck. The lid opening of the kit is 100% electric being powered by an 24 V actuator allowing safe operation and not requiring local certification.



“ Perfect integration with the environment ”

- Index:**
- a. Intake Column
  - b. Container
  - c. Concrete Bunker
  - d. Pedestrian Platform
  - e. Interior Platform



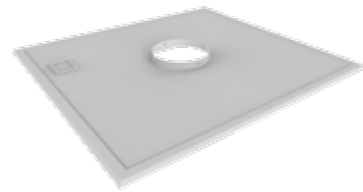
# COMPONENTS

## Intake Column

Characterized by their simplicity and functionality, Sotkon intake columns present an attractive design for street furniture. Our products are designed to ergonomically provide ease of use, safety and hygiene. The intake columns are produced in stainless steel to preserve its appearance and to endure extremely aggressive environments. It is possible to provide models on request for special projects. The opening can be modified for specific types of waste.



## Pedestrian Platform



The construction of the pedestrian platform (lid) and of the various components are made with anti corrosion resistant materials. The movement is controlled by means of an electric actuator for operation with 24 volts and with the help of a gas spring. The remote control is wifi and parameterized for individual operation. A perimeter gutter eliminates the possibility of infiltrations of rainwater. In order to ensure seamless integration in the surrounding area different finishing options of the lid are available.

## Container

Containers are designed to have an exceptional mechanical strength. The body of the container is made of polyethylene by rotational moulding and metal hardware is reinforced to withstand the heavy weight of the waste. All metal hardware is hot galvanized. The vertical movable pins are mechanically driven through helical compression springs. Each side arm has two coupling points which permit the lifting and the container elevation.



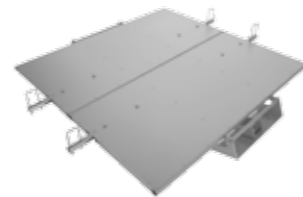
## Concrete Bunker



The concrete bunker is a precast part comprising of a base, two transverse walls and two longitudinal walls. The internal shape of the bunker is designed to match the fixing of opening mechanisms, safety platform and external shape of the polyethylene container. The base has two recesses for the storage of liquids from cleaning operations. Sotkon bunkers are designed to meet all applicable specifications of the Euro Code and to prevent any buoyancy effect.

## Interior Platform

The interior platform is constructed of a hot galvanized steel device and supports the container to allow the waste disposal. When the container is elevated the platform moves through the action of two gas-hydraulic cylinders to the horizontal position, getting fixed and stable by the action of four electromechanical locks with sensors that indicate, via wifi, the platform is properly closed. Serves as the support for the container before the disposal. In the downward movement of the container, it is placed on the platform and the operator releases the locks returning the container back to its initial position.



## SOTKIS Intelligent Systems

SOTKIS is an integrated management system that provides information about the various processes involved in waste collection so as to maximize the efficiency of allocated resources and increase the profitability of service. Using the SOTKIS system, each entity may have information about the filling level of containers, plan the most efficient route, know frequencies of deposition and introduce systems Pay As You Throw (PAYT).



# Optionals

## Intake Column



**Special Projects:**  
Pacman intake column



**Special Projects:**  
Ypsilon intake column



**Optional:**  
Lid soft close



**Optional:**  
Reduction for glass and batteries



**Optional:**  
Pedal

*\* Other solutions on request.*



**Optional:**  
Internal trapdoor for reduction



**Optional:**  
Single or double drum for access restriction



**Optional:**  
Retro Intake column with access control

## Pedestrian Platform (Finishing)



.Resin epoxy in different colours



.Aluminum



.Cobblestones



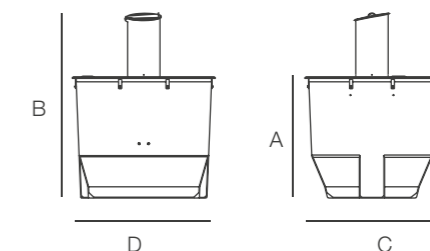
.Granite stones

*\* Other finishes on request.*

## Technical Drawings (Assembly)

	A	B	C	D
Side Loading	1920	2920	2130	2280

*Units in mm (approx values).  
These dimensions are not suitable for civil construction.*



# SIDE LOADING

UNDERGROUND  
SYSTEM



sotkon  
waste systems



CE

All the components are tested according to the  
European normative machine 2006/42/CE.

Worldwide patented system