

sotkon
waste systems

en
**Simple and
efficient.**



System

EVOS



System EVOS

The Evos system features a plastic container for top loading waste collection using a crane installed on a collection truck. It has a unitary concrete bunker, the collection containers are made of polyethylene to prevent corrosion, and the waste is received via surface intake columns. The pedestrian platform, the intake columns and the container are fixed and their movement is carried out jointly by the truck's crane. After lifting the container there is a safety platform that covers the gap, preventing accidental fall.



+ Collection vehicles

An Evos container can be picked up by top loading crane trucks equipped with Kinshofer or bilateral automatic pickup systems. A faster and more automatic collection operated safely.

= Fewer resources

Due to the use of a plastic container, Evos has a lower empty load, allowing collection with lower capacity cranes, thus reducing operating costs. This factor combined with the possibility of performing the collection process with a single worker allows the Evos system to contribute to the use of fewer resources.

+ Corrosion resistance

The Evos system container is made of plastic, and the metal fittings that make the opening and closing mechanisms of the bottoms are placed on the outside of the container, thus not being in contact with the waste and increasing the resistance of the whole set to corrosion in comparison with all-metal containers.

€€+ Fast payback

The Evos system offers a fast return on investment (ROI) compared to surface container collection systems.



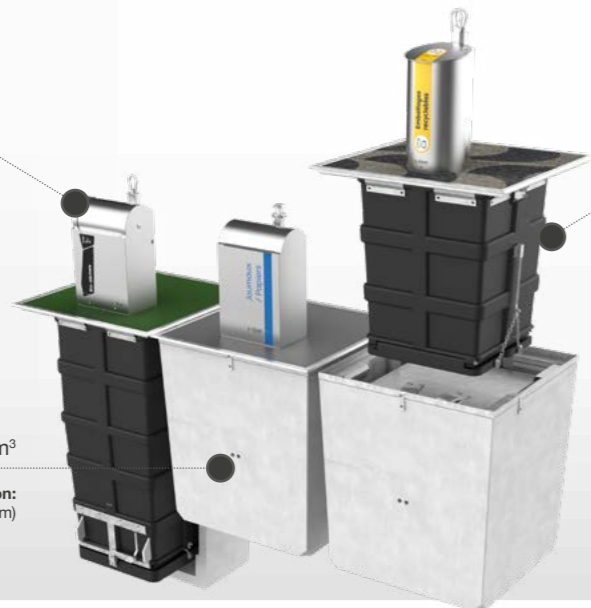
3/5m³

Top loading collection:
(Single-Hook Palpeur)



3/5m³

Top loading collection:
(Mushroom)



3/5m³

Top loading collection:
(Double-Hook)

Intake Columns

Manufactured mostly in stainless steel to preserve exterior appearance and strength in harsh environments, they are designed with ergonomics, ease of use, and safety in mind.

** Other finishes and solutions on request.*

Container

The containers, due to the way they were designed, have a superior mechanical resistance. The deposit and the lower lids of the container are made of polyethylene by rotational molding and the metal fittings are made of hot-dip galvanized steel. The bottom consists of two or one polyethylene doors with leachate retention basins and steel inner reinforcements. Depending on the crane's lifting and loading system, the container is adapted with appropriate hardware and hooks.

-  .Double-Hook
3/5 m³
-  ."Mushroom"
3/5 m³
-  .Palpeur
3/5m³
-  .Single Hook
3/5m³
-  .F90 Hook
3/5m³

Concrete Bunker

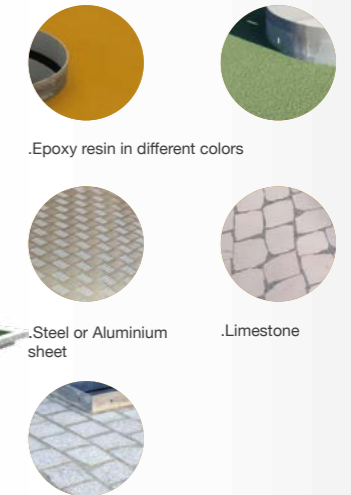
The unitary concrete bunker allows the container to be placed individually and can have various installation configurations. The composition of the materials used in the construction of the bunker prevents the entry of water, which allows the installation of these containers in areas with higher phreatic levels.

Pedestrian Platform

The pedestrian platform is made of laminated steel sheet, properly treated against corrosion for harsh conditions.

Pedestrian Platform

.Surface finishing:



.Epoxy resin in different colors

.Steel or Aluminium sheet

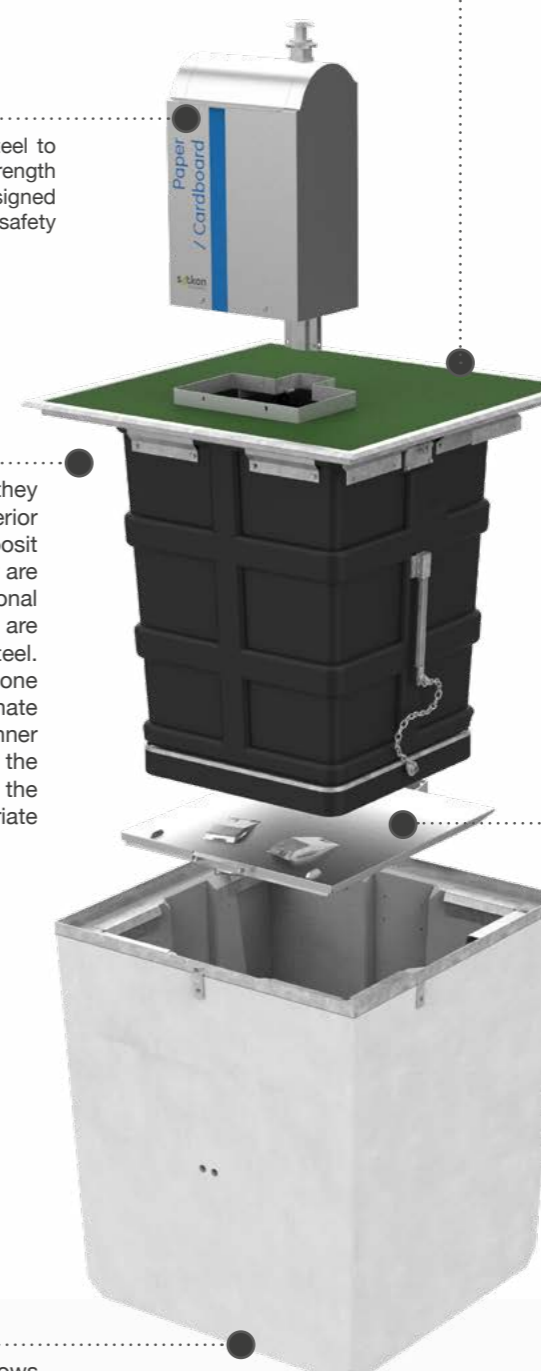
.Limestone

.Granite

** Other finishes and solutions on request.*

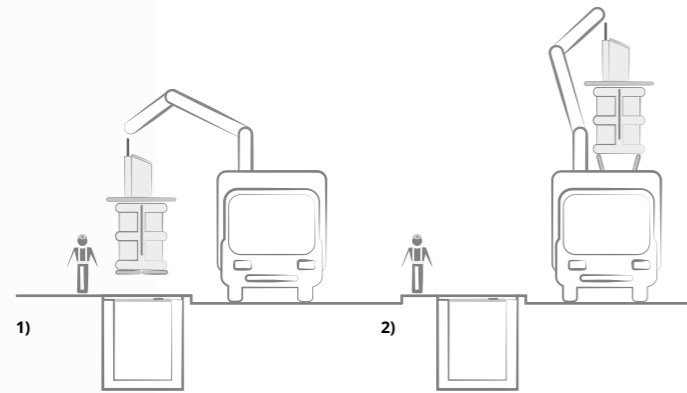
Safety Platform

The safety platform is a device that, when the container is removed from the inside of the concrete bunker, occupies the entire mouth of the bunker in order to prevent the accidental fall of people or animals during collection. It is moved by gas spring operation.



Collection system

The collection system is designed to be handled conveniently by a single operator. Different types of fittings and hooks are applied to the intake column depending on the system on the truck crane.



Collection "Mushroom" / Double-Hook

The container has bottom opening (3m³ or 5m³ capacity) with one or two doors with leachate retention basins and is adapted for top loading trucks with crane prepared for the double-hook or "Kinshofer" mushroom type of fitting.



1

- 1) Movement of the crane and coupling in the hooks / mushroom existing in the container.
- 2) Lifting the container from inside the bunker and automatically opening of the bottom.



2



1

Collection Superior Palpeur

The container has a bottom opening (3m³ or 5m³ capacity) with a door with a leachate retention basin and is adapted for top loading trucks with a crane prepared for single-hook fitting and with a "palpeur" pedal for bottom opening. The bottom can be opened by impact or manually by steel cable.



2

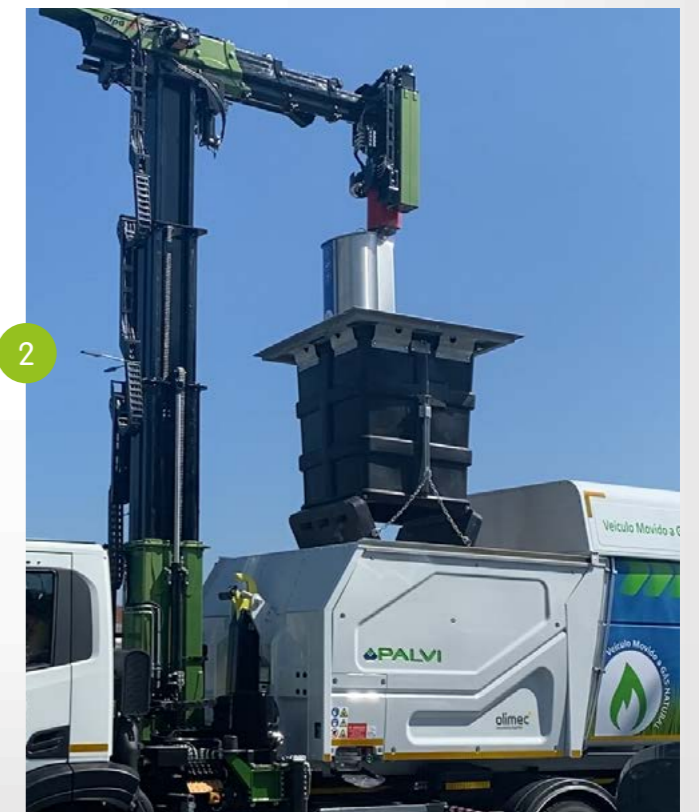
Collection Bilateral Top Collection

The container has bottom opening (3m³ or 5m³ capacity) with two doors with leachate retention basin and is adapted for top loading trucks with automatic crane controlled inside the truck cab. The container is equipped with mushroom or F90 fitting.



1

2



Simple to Install, Collect and Use

Sotkon's Evos system was designed taking into consideration ergonomics, user friendliness, hygiene and safety.

1) Simple to Install

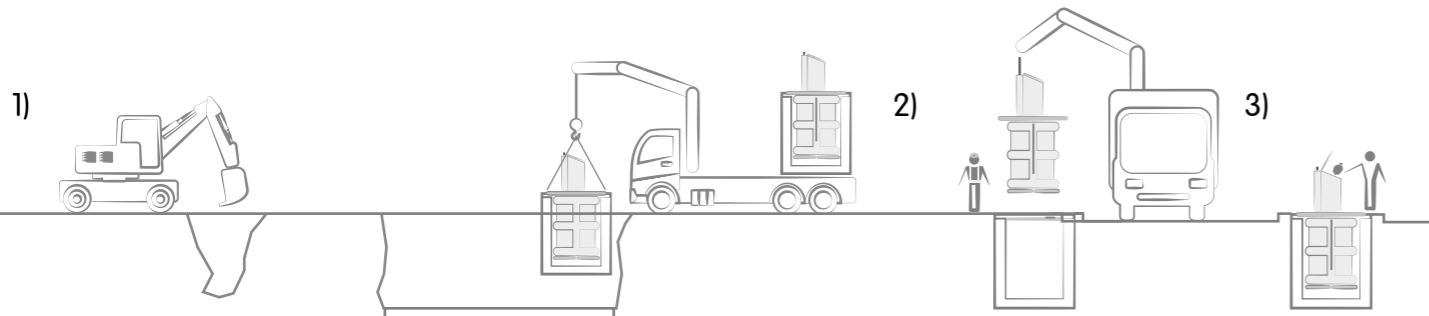
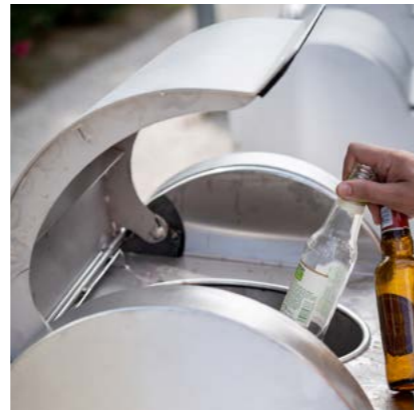
The Evos system allows easy adaptation to the characteristics of the installation terrain and can be integrated in all urban areas, especially in areas with high pedestrian traffic. It is extremely easy to overcome all barriers created by underground cables and other infrastructure.

2) Easy to Collect

The adaptation to the different collection types (single-hook, double-hook, Mushroom, or F90) makes the Evos system simple to operate by a single operator.

3) Simple to use

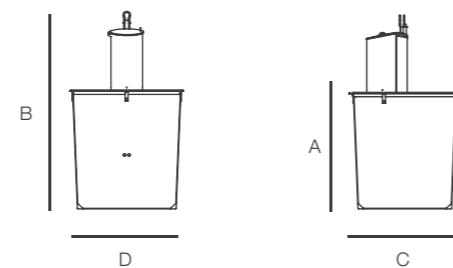
The attractive design and ease of use of our intake columns encourage the public to use the equipment and can be enhanced with access control for PAYT systems that increase waste separation rates. Sotkon systems encourage good environmental practices and better waste separation, thus contributing to increased recycling.



Technical Drawings (Assembly)

Capacity	A	B	C	D
3M ³	1970	2970	1840	1860
5M ³	3220	4220	1840	1860

Units in mm (approximate values).
These dimensions are not suitable for civil construction.



Intake Columns



Ikon



Drop



Orion



Wido



Max



Max Double Drum



Mika



The Sotkis system is a system for monitoring and managing the processes involved in waste disposal and collection. Associated with the Sotkis management system, Sotkon has developed equipment that enables the implementation of the "pay-as-you-throw", or PAYT, principle for fairer taxation on waste disposal.

www.sotkis.com

PAYT
Pay as you throw

Mobile APP
Available on Google play and the App Store

Level

Level Sensor



.Sensor

Access

Access Control



.Smart Tag/Card





Find out more about this equipment here!



www.sotkon.com

V4.0522.EN



sotkon
waste systems

**Simple and
efficient.**



All the components are tested with TUV Rheinland supervision according to the standards EN13071-1 and EN13071-2 and European normative machine 2006/42/CE.

Worldwide Patented System

